

PARALLELOGRAM ARM

SAFETY NOTICE

This product is intended to be:

- operated only by adults and under constant supervision
- used indoor only at normal room temperature - outdoor use is at the risk of the user

This product must not be used:

- unattended, due to a risk of fire
- under the influence of narcotic drugs or any other substance affecting the user's behavior and reaction time, there is a risk of injury or damage to property
- in flammable and chemically, mechanically or otherwise aggressive environment

MP JET bears no responsibility for damage to health or property caused by improper use of the product, its wrong settings (such as resistance to movement), assembly or careless handling. Any modification of this product is at the risk of the user.

The kit contains small parts. There is a risk of swallowing and choking. Not suitable for children under the age of three years old.

Before each use of the product, resistance to movement, security of the soldering pen in the product head and attachment of the parallelogram hand to the work surface must be checked, to avoid injury or damage to property.

Necessary build tools

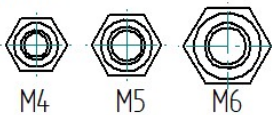
Wrench: 7 mm (for M4 nuts) and 10 mm (for M6 nuts)

Allen key (hex wrench) 3 mm with length at least 90 mm (for M4 screws) and 5 mm (for M6 screws)

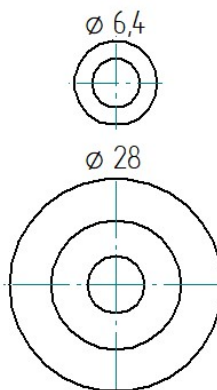
Screwdriver: PH 1 for wood screws

Sketch of fasteners in scale 1:1

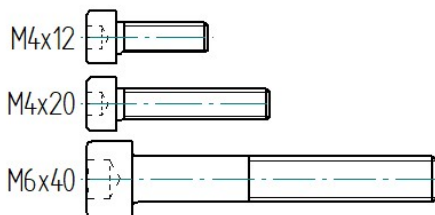
Nuts



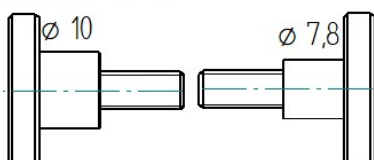
Washers



Screws



Knurled screws



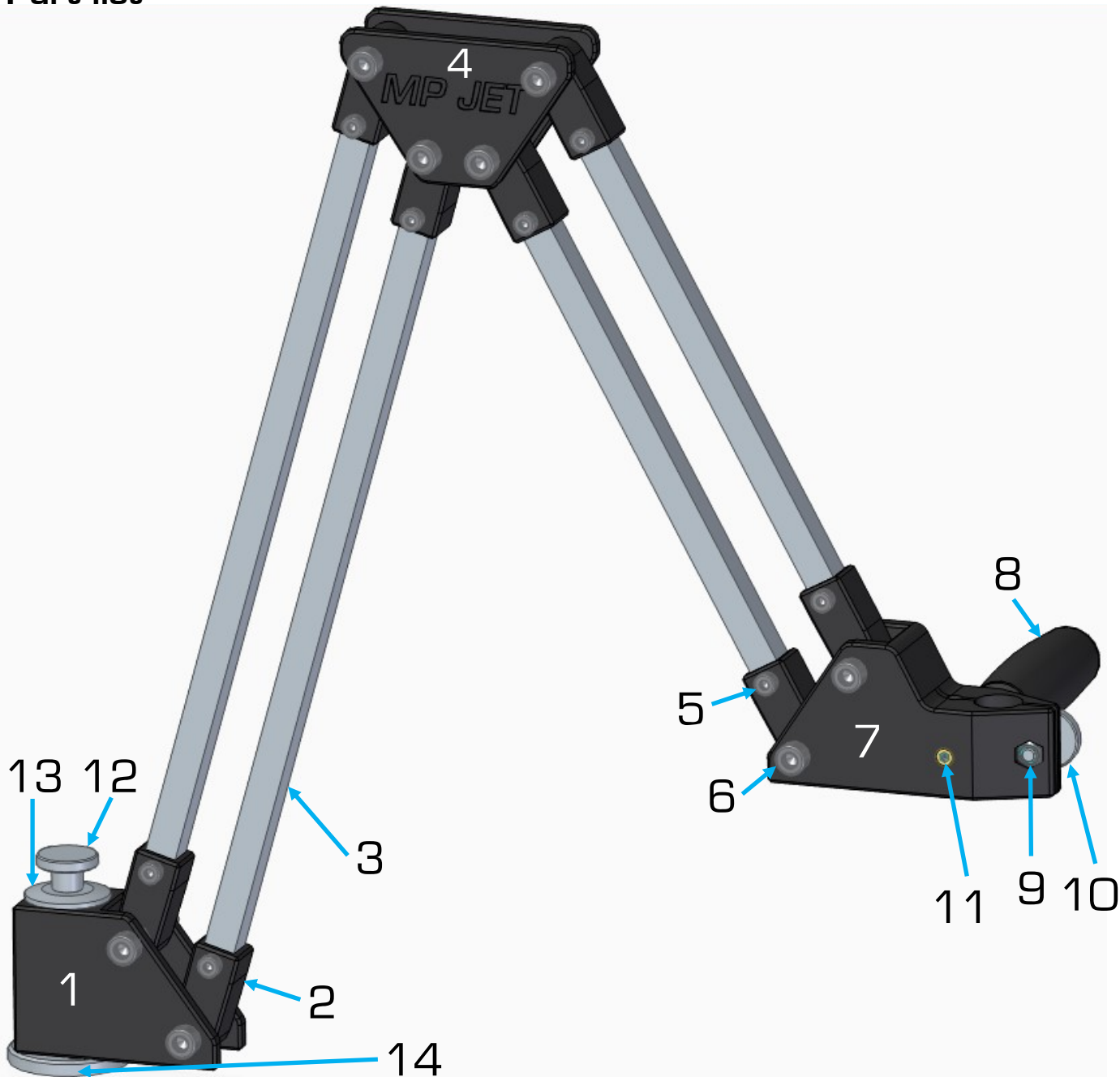
Scan the QR code to access the online manual with color images, or find it at

<https://mpjet.com/news/en/downloads/manuals>



PARALELLOGRAM ARM

Part list

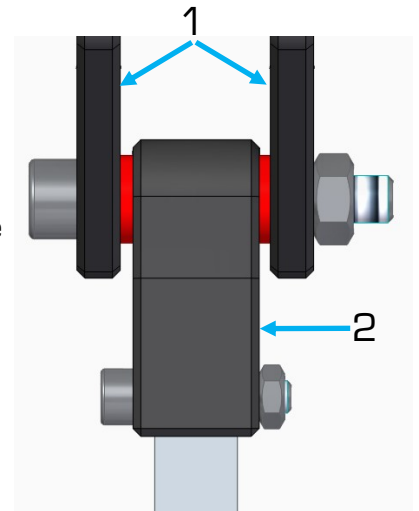


Nr.	Part name	Nr.	Part name
1	Base	8	Handle and screw M4x12
2	Joint	9	Nut M5
3	Arm	10	Knurled screw (Ø 7,8 mm)
4	Side piece	11	Heat set insert for the handle
5	Screw M4x20 and nut M4	12	Knurled screw (Ø 10 mm)
6	Screw M6x40, nut M5 and washers Ø 6,4	13	Pin washer (Ø 28)
7	Head piece	14	Pin

PARALLELOGRAM ARM

Assembly manual for parallelogram arm

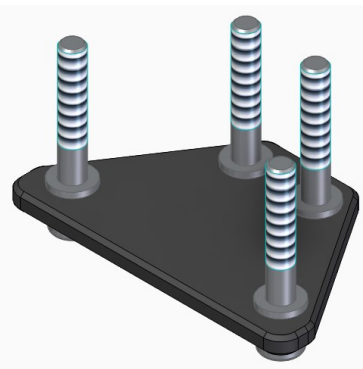
1. In all four pre-assembled arms, tighten the inserted M4 screws and M4 nuts.
2. Assemble the base and the longer arm using the M6x40 screw, two $\varnothing 6,4$ mm washers and M6 nut. Put the screw into the $\varnothing 6$ mm hole in the base and a washer on it. Insert the arm so that the hole in the arm joint and the screw are coaxial. Push the screw so that it is inserted into the hole in the joint of the arm, but it does not protrude from it. From the other side of the joint, thread a washer into the gap between the joint and the base and, for example with a small Allen key, align it to be coaxial with the screw. After aligning, push the bolt all the way through the base and tighten with a nut.
3. Step 2 is repeated to attach the second longer arm to the base and then both shorter arms to the head. The orientation of the screw head/nut does not affect functionality, but we recommend leaving the screw heads on one side and the nuts on the other.



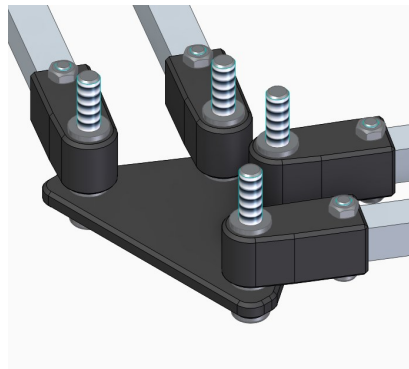
Part sequence in steps 2 a 3

The picture on the right shows the correct order of parts when assembling the arm into the base and the head (the $\varnothing 6.4$ mm washers are highlighted in red).

4. Put the four remaining M6x40 screws into the side piece so that the screw heads are on the side with the MP JET logo. Slide $\varnothing 6.4$ mm washers onto these screws, inserted through the side piece.
5. Next, slide the joints of the free ends of the arms and the washers $\varnothing 6.4$ mm onto the screws.
6. Place the second side piece on all four screws (again with the MP JET logo facing outwards) and screw in the M6 nuts.



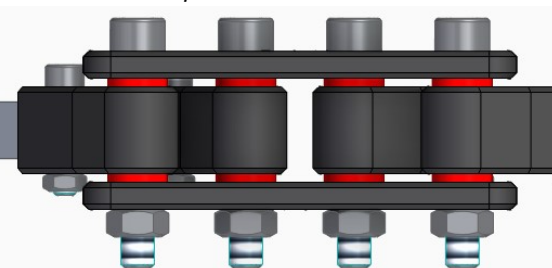
Step 4



Step 5



Step 6



The correct order of the parts when viewed from top after assembly in steps 4-6 (highlighted in red are the washers $\varnothing 6.4$ mm).

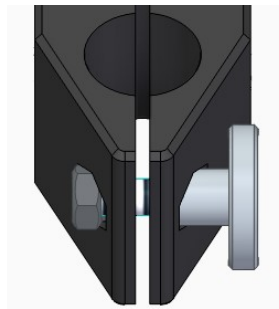
PARALELLOGRAM ARM

Assembly manual for parallelogram arm

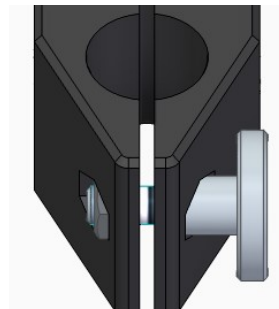
7. Lightly insert the M5 nut into the hexagonal hole of the head piece near the front from the other side than the one from which you want to have the tightening screw of the soldering pen (e.g. if you want to have the screw from the right, insert the nut from the left). Into the hole from the other side, than is the nut, insert a knurled screw (one with smaller diameter under the head - 7.8 mm) and screw it into the nut. By further tightening, pull the nut into the hexagonal hole.



Lightly inserted M5 nut

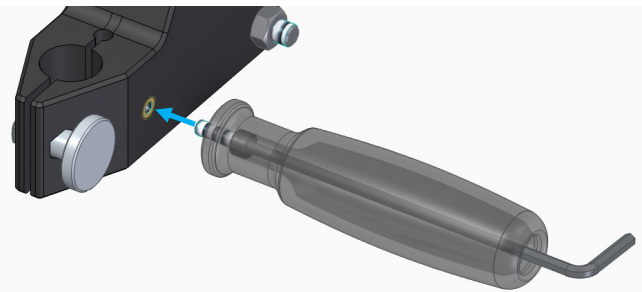


Screwed in knurled screw before pulling in the nut

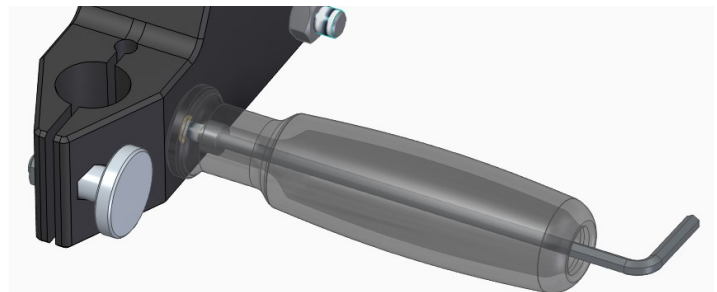


Correct pulling in of the nut

8. Put the M4x12 screw on the Allen key. Placed on the key like this, push it through the handle and screw it into the threaded insert. Again, select the side of the head on which you want the handle.

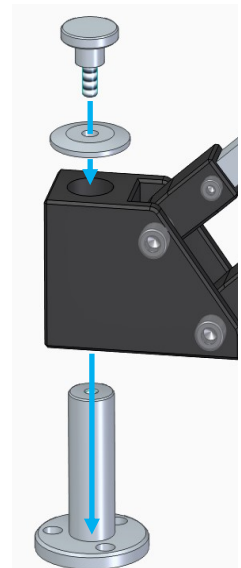


M4x12 screw mounted on a 3 mm Allen key and pushed through the handle



Handle screwed to the head piece

9. Screw the pin of the parallelogram to the table or other board, either using the wood screws from the package, or you can also use the M8 thread on the bottom off the pin (with your own screw) for fastening through a hole in the table, for example.
10. Slide the parallelogram assembly onto the pin and secure it using a large \varnothing 28 mm washer and the knurled screw with a larger diameter under the head - 10 mm.
11. Fasten the soldering handpiece to the head piece, either by pushing the cable through the hole, or after unscrewing the thumb screw of the head by carefully (for example, using a flat screwdriver) opening the clamping groove of the head and passing the cable through. Then fix the handpiece by tightening the knurled screw on the head.
12. By gently tightening or loosening the M6 screws and nuts on the side, base and head pieces, you can adjust the resistance that the arm puts up to movement. It should be such that it can be handled comfortably, but so that the soldering pen remains in the same position when released.



Step 10